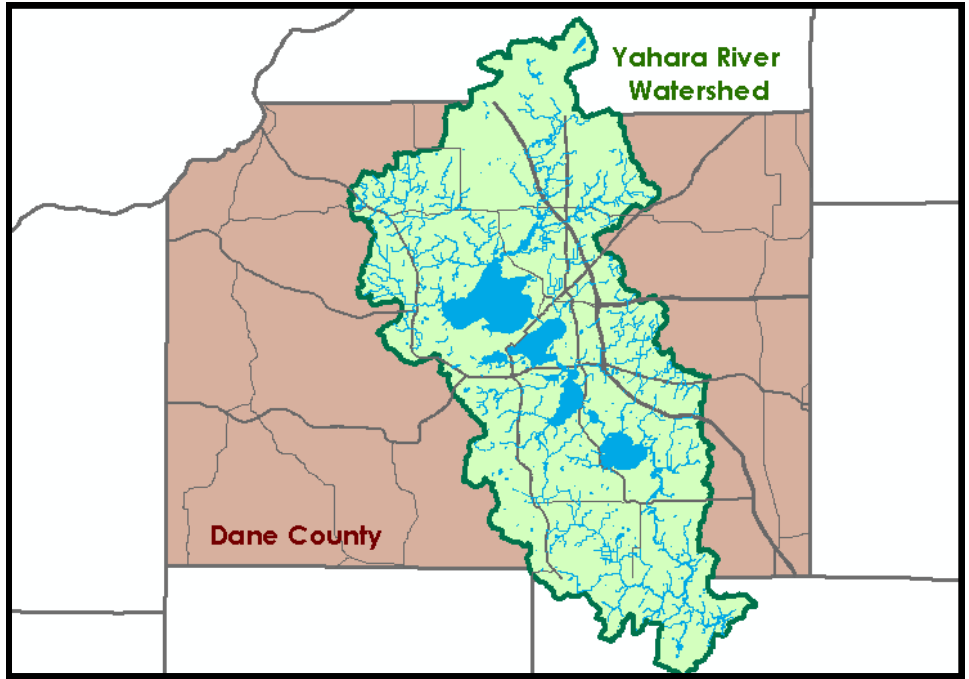


Yahara WINS



Yahara Watershed Improvement Network (WINS) Adaptive Management Cost-Share Program

Purpose:

Madison Metropolitan Sewerage District, in collaboration with over 30 partners, is pioneering a new approach to reduce phosphorus runoff called Watershed Adaptive Management. Excessive levels of phosphorus can harm rivers, streams and lakes. In watershed adaptive management, partners work together to implement cost effective practices that reduce phosphorus from all sources. This collaborative effort is called Yahara WINS and is focused in the Yahara River watershed.

Cost-Share Program and Eligible Practices:

One way to reduce phosphorus runoff is through the implementation of agricultural conservation practices. This program provides cost-share funds to support conservation practices and systems that reduce both nutrient and sediment transport to nearby streams and have the greatest potential for water quality benefits. Eligible practices include: diversions, grassed waterways, terraces, grade stabilization structures, agricultural sediment basins, water and sediment control basins, wetland restorations, roof runoff managements, roofs and covers over feedlots, manure storages, animal lot relocations, and additional best management practices as approved by the Land Conservation Committee. Producers/landowners with agricultural land located in the Yahara River watershed are eligible as funds are available.

For more information, please contact:

Eric Krueger

Conservation Specialist
Krueger.eric@countyofdane.com
(608) 283-1522

Shawn Esser

Conservation Specialist
Esser.shawn@countyofdane.com
(608) 283-1521

Program Requirements:

- ✦ The cost share recipient agrees to maintain the length of the operation and maintenance period.
- ✦ If payments exceed \$25,000, the maintenance agreement between Dane County and the producer/landowner will be recorded on the deed for 10 years.
- ✦ Manure storage and management must comply with Dane County Code of Ordinances Ch. 14. Manure storage systems must be designed with a minimum of six month storage capacity with an additional two months capacity to account for variable weather conditions.
- ✦ Producers/landowners receiving cost-share funds for manure storage will not land apply liquid manure between December 1st and March 31st of each calendar year without prior written approval from the Director of the Dane County Land and Water Resources Department.

Funding and Practices:

- ✦ Dane County maintains average cost information for common conservation practices and uses this information to estimate project costs and cost-share rates.
- ✦ Conservation practices will be cost-shared up to 70% of actual cost. If the producer/landowner receives cost-share funds from other programs, WINs funds may be used to increase cost-share rate up to 90% of actual costs.
- ✦ Wetland restoration and structures designed to trap water and sediment, such as agricultural sediment basin, water and sediment basin, and grade stabilization structures, may receive up to 90% of the total cost to implement the practice. If a producer/landowner receives cost-share funds from other programs, WINs funds maybe used to increase cost-share to 100% of actual costs.
- ✦ Wetland restorations and structures designed to trap water and sediment may receive a one-time payment of \$2,500 per acre for land taken out of agricultural production.

Grassed Waterway



Manure Storage



Wetland Restoration



Application Process:

1



Signup period is on-going and will continue until all funds are allocated.

2



Land Conservation Committee approves individual cost-share agreements and payments.